

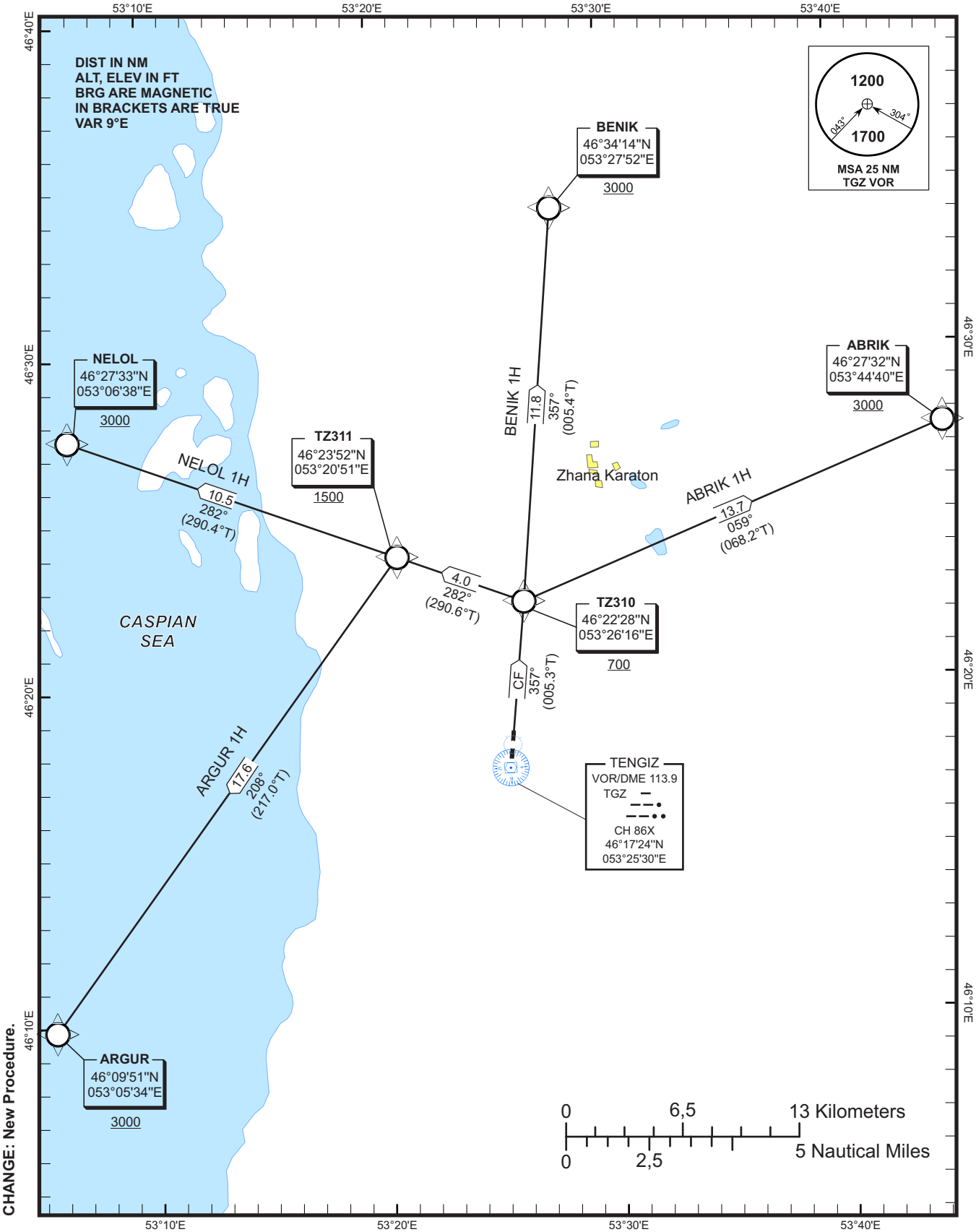
STANDARD DEPARTURE
CHART - INSTRUMENT
(SID) - ICAO

TRANSITION ALTITUDE
10000 FT

TENGIZ TOWER 119.20

ABRIK 1H, ARGUR 1H,
NELOL 1H, BENIK 1H.
(RNP1 SID BASED ON GNSS)

TENGIZ
RWY 36



STANDARD DEPARTURE PROCEDURE RWY 36

TABULAR DESCRIPTION

ABRIK 1H											
Serial Number	Path Descriptor	Waypoint Identifier	Fly-Over	Course °M (°T)	Magnetic Variation (°)	Distance NM	Turn Direction	Altitude FT	Speed KT	VPA (°)	Navigation Specification
010	CF	TZ310	-	357 (005.3)	9	-	-	+700	-	-	RNP1
020	TF	ABRIK	-	059 (068.2)	9	13.7	R	+3000	-	-	RNP1

WAYPOINT LIST

Waypoint Idenfier	Coordinates
TZ310	46°22'28"N 053°26'16"E
ABRIK	46°27'32"N 053°44'40"E

TABULAR DESCRIPTION

ARGUR 1H											
Serial Number	Path Descriptor	Waypoint Identifier	Fly-Over	Course °M (°T)	Magnetic Variation (°)	Distance NM	Turn Direction	Altitude FT	Speed KT	VPA (°)	Navigation Specification
010	CF	TZ310	-	357 (005.3)	9	-	-	+700	-	-	RNP1
020	TF	TZ311	-	282 (290.6)	9	4.0	L	+1500	-	-	RNP1
030	TF	ARGUR	-	208 (217.0)	9	17.6	L	+3000	-	-	RNP1

WAYPOINT LIST

Waypoint Idenfier	Coordinates
TZ310	46°22'28"N 053°26'16"E
TZ311	46°23'52"N 053°20'51"E
ARGUR	46°09'51"N 053°05'34"E

TABULAR DESCRIPTION

NELOL 1H											
Serial Number	Path Descriptor	Waypoint Identifier	Fly-Over	Course °M (°T)	Magnetic Variation (°)	Distance NM	Turn Direction	Altitude FT	Speed KT	VPA (°)	Navigation Specification
010	CF	TZ310	-	357 (005.3)	9	-	-	+700	-	-	RNP1
020	TF	TZ311	-	282 (290.6)	9	4.0	L	+1500	-	-	RNP1
030	TF	NELOL	-	282 (290.4)	9	10.5	-	+3000	-	-	RNP1

WAYPOINT LIST

Waypoint Idenfier	Coordinates
TZ310	46°22'28"N 053°26'16"E
TZ311	46°23'52"N 053°20'51"E
NELOL	46°27'33"N 053°06'38"E

TABULAR DESCRIPTION

BENIK 1H											
Serial Number	Path Descriptor	Waypoint Identifier	Fly-Over	Course °M (°T)	Magnetic Variation (°)	Distance NM	Turn Direction	Altitude FT	Speed KT	VPA (°)	Navigation Specification
010	CF	TZ310	-	357 (005.3)	9	-	-	+700	-	-	RNP1
020	TF	BENIK	-	357 (005.4)	9	11.8	-	+3000	-	-	RNP1

WAYPOINT LIST

Waypoint Idenfier	Coordinates
TZ310	46°22'28"N 053°26'16"E
BENIK	46°34'14"N 053°27'52"E